

Birmingham City

Football Club



**SWINDON
TOWN**

31st October
1970

Official Magazine 1s
(WITH FOOTBALL LEAGUE REVIEW 1/6)



MODEL MEN . . .

Mike Kelly and Phil Summerill stepped into the glamorous world of male modelling recently. They were our volunteers when City Centre Store Rackhams asked Blues players to co-operate in a window display on modern men's fashion.

They soon discovered that there is plenty of hard work in a long photographic session and, of course, they came in for a spot of leg-pulling from the rest of the lads!

We show one of the results of the photographer's call at St Andrew's. Mike (left) and Phil are decked out in the latest fashion, while manager Freddie Goodwin and skipper Trevor Hockey add the football image.

SEE THE NEW CORTINA TODAY



Ford introduces this new car which brings motoring to a new peak. There are 35 different models to choose from.

BRISTOL STREET MOTORS can find a model ideal for your purpose . . . virtually tailor-made to your taste.

FORD SPORTING LEAGUE

	Pts.		Pts.		Pts.
1 Fulham	36	4 Bournemouth	31	7 Watford	25
2 Oldham	35	5 Luton	31	Leicester	25
3 Aldershot	33	6 Halifax	28	Lincoln	25
				10 West Ham	23

The top team after today's games will qualify for the October monthly prize.

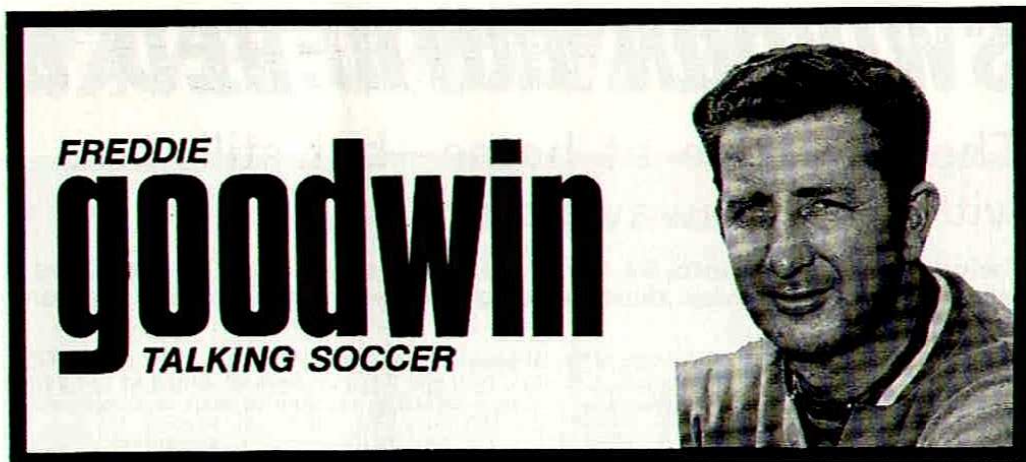
Points scoring: 1—home goal, 2—away goal, deduct 5 for player's caution, deduct 10 for sending-off.

Birmingham City Football Club Limited

Chairman: **C. C. COOMBS**
 Vice-Chairman: **D. F. WISEMAN, O.B.E.**
 Directors: **ALD. N. A. BOSWORTH, LL.B., H. DARE,**
L. J. MORRIS, J. F. WISEMAN
 Hon. Medical Officer: **DR. D. H. ELLIS, M.B., Ch.B.**
 Manager: **FREDDIE GOODWIN**
 Secretary: **ALAN INSTONE**
 Commercial Manager: **DENNIS GILBERT**



St Andrew's Ground, Birmingham B9 4NH Telephone 021-772 0101



Everyone in football will sympathise with Stoke City for losing the services of two fine players, Peter Dobing and Willie Stevenson, in consecutive weeks and we all hope they make quick and complete recoveries from broken legs.

This is a most difficult period for the players concerned as they are both approaching the twilight of their careers. Ahead of them lies many weeks of frustration and boredom before they can start on the road to recovery. Even then the progress can be slow according to the type of break each player suffered.

Just to describe these injuries as 'broken legs' does not indicate the extent, the position or the type of break that they have suffered. When they come out of plaster, they will appear to progress quite rapidly for two or three weeks, but it's the final stages of fitness that will take them a long time to acquire. This is the period when a player needs great faith and determination to overcome the barrier which separates an ordinary individual from a professional footballer.

It is an injury like this—which, thank heavens, is not too common—which footballers on the whole feel can never happen to them. When it does, there is a profound feeling of shock. This is why I try to impress upon our players that you have to play every game as though it will be your last.

By that, I mean that the satisfaction a player gets out of a game is comparable to the efforts he puts into it. All players take their fitness for granted but even a slight injury makes the really dedicated footballer disappointed if he has to miss a game.

Only when a player does receive a knock or an injury does it really bring home to him the value of fitness he tends to take for granted every week. So good luck to Peter and Willie—we will all look forward to the day when they turn out again for Stoke in a first-team game.

● *This afternoon's visitors are Swindon Town who challenged for promotion very strongly last season. They are a team whose players have been fairly regular over the past two years and they have won the Football League Cup and the Anglo-Italian Cup during this period.*

Although our position in the League is not a happy one, I do feel we have been playing better than recent results might indicate. We know we have a tough job on our hands today, but as in our previous games, nobody can complain about the efforts of our players. Today we hope to turn those efforts into victory.

SWINDON BOTHERED BY

They are fine at home—but still without an away point

Swindon Town call into St Andrew's today with hopes of checking a record that has haunted their bid to get among the promotion-seeking set.

Their problem: they are the only one of the 92 League clubs without a single away point. Trips to Sheffield United, Blackburn, Carlisle, Charlton, Hull and Norwich have all ended in sad defeat and County Ground loyalists may wonder if it is a travelling reaction to their last competitive success away from home.

That was in Naples last May when a lunatic fringe among a 50,000 Italian crowd caused the final of the Anglo-Italian Tournament to be abandoned with Swindon cruising to a comfortable 3-0 success. Broken-up benches, bricks and stones showered on to the pitch, but although the game was called off after 79 minutes, the trophy was awarded to the Wiltshire club.

It was a frightening experience for the Swindon side—yet one must underline that the terrace 'explosion' had nothing to do with the on-the-field bothers that had marred many of the earlier games in this inaugural year of the competition.

It was simply a reaction by the Italian mob against their own team's failure to conquer an English Second Division side. Swindon were upset that the match couldn't have gone the full distance and were sorry for the Italian players who had not played badly but had simply been beaten by Swindon's ability to play a Continental-style game.

Alan Williams, the *Daily Express* man-on-the-spot, told us that Swindon were a marvellous advertisement for Britain, slowing the game down and then breaking quickly and dangerously for Peter Noble (2) and Arthur Horsfield to score the match-winning goals.

So, for the second year in succession, Swindon proved themselves masters in the art of toppling Italian teams, for in 1969, they had firmly beaten AS Roma in a two-leg competition for a trophy awarded for a meeting between the League Cup winners of the two countries. Incidentally, Manchester City were beaten by Bologna in this year's repeat of the idea.

The Swindon player who captured the imagination of Italian soccer-lovers was left winger Don Rogers. Alan Williams said that the Italian journalists couldn't understand why the £100,000 rated Swindon star wasn't with the England party in the World Cup.

Rogers, 22-goal top scorer when Swindon came out of the Third Division two years ago, lost some of his scoring sharpness last term when he netted only nine League goals. But, with that Italian night of success behind him, the Under-23 international has been back at his peak this season, netting two goals against both Watford and mighty Liverpool in the Football League Cup. However, Swindon went out of the Competition in a 1-0 defeat at Fulham this week.



SWINDON TOWN, 1970-71 . . . Back (from left): P. Downsborough, R. Jones. Middle (from left): M. Owen (trainer), N. Trollope, F. Burrows, O. Dawson, J. Butler, R. Thomas, F. Ford (Manager). Front (from left): A. Gough, J. Smith, P. Noble, A. Horsfield, S. Harland, R. Smart, D. Dangerfield, D. Rogers.

'TRAVEL SICKNESS'

SWINDON TOWN FOOTBALL CLUB

Founded: 1881. Elected to League Division III: 1920. Ground: The County Ground, Swindon, Wilts. Record Attendance: 29,106 v Watford, March, 1969. Runners-up, Division III: 1962-63, 1968-69. Football League Cup winners: 1969. Anglo-Italian Tournament winners: 1970.

RECORD IN LAST TEN SEASONS

	Div	Posn	W	Pts		Div	Posn	W	Pts
1969-70	2	5th	17	50	1964-65	2	21st	14	33
1968-69	3	2nd	27	64	1963-64	2	14th	14	38
1967-68	3	10th	16	49	1962-63	3	2nd	22	58
1966-67	3	8th	20	50	1961-62	3	9th	17	49
1965-66	3	7th	19	57	1960-61	3	16th	14	43

Yet, strangely, Swindon have not managed to find last season's form which took them to a highest-ever placing of fifth in Division Two—and to within three points of reaching the First Division. The travelling record is clearly their 'anchor' at the moment, for, at home, they have been effective, dropping only three points in eight games and also winning two League Cup-ties.

Even so, their position before last weekend's impressive win against Middlesbrough was such that they had gained fewer points from their first 13 matches than they did when relegated in 1964-65. The irritating point is that Town have lost five away games by the odd goal and their worst defeat was by only 2-0 against high-flying Hull City.

Clearly, there is not much wrong with such a line-up—and what defence can rest against a forward line that includes Rogers and ten-goal Arthur Horsfield? A regular marksman with Middlesbrough, Horsfield had a brief spell with Newcastle before switching to Swindon last season. He topped their goal-chart with 18 League goals and already this campaign he has filed three two-goal performances—against Portsmouth, Middlesbrough and Watford (League Cup).

Despite recent setbacks, Swindon manager Fred Ford remains loyal to the nucleus of the side that won the promotion and League Cup double in 1969. He reasons that this set have proved themselves over a long period and will eventually respond with their known form.

At the moment, this sequence without an away win in the League stretches back to 9th February this year when they won 2-1 at Sheffield United. Since then, they have taken only three away points and, at the moment, have lost eight in succession.

The club's inability to get into the early promotion scramble has been reflected in home gates, which show a drop of over 3,000 a game on last season's figure of almost 20,000. It is a financial disappointment, for, during the summer, a new 5,000-seater grandstand was erected at The County Ground under a loan scheme with the Borough of Swindon. This has increased the ground capacity to over 30,000—more than the record set last year—and, naturally, the club were hoping for playing success to help pay for this enterprise.

However, a flourishing development scheme is paying the way and everyone in the Wiltshire town is certain that Rogers & Co will soon get in on the promotion scene.



JOHN TROLLOPE

In close-up . . . Swindon Town

PETER DOWNSBOROUGH (goalkeeper): Born Halifax. Signed in August, 1965, from Halifax. Regular member of promotion winning side of 1968-69. Played in Football League Cup Final team of 1968-69. Height 5' 10½". Weight 13st 2lbs.

ROY JONES (goalkeeper): Born Clacton-on-Sea. Signed in October 1967 after obtaining his release from the RAF. Height 5' 11". Weight 11st 12lbs.

OWEN DAWSON (right back): Born Hatfield. Signed from Portsmouth in June 1962. He was a regular first-team player until losing his place through injury. A former Youth International. Regular member of promotion winning side of 1968-69. Height 5' 9½". Weight 11st 12lbs.

ROD THOMAS (full back): Born Glyncorrwg. A former youth player, he was signed from Gloucester in July 1964. Has gained full and Under-23 caps for Wales. Regular member of promotion winning side of 1968-69. Played in Football League Cup Final team of 1968-69. Height 6' 0". Weight 12st 10lbs.

JOE BUTLER (full back): Born Newcastle. Joined Swindon from Newcastle in August, 1965. Regular member of promotion winning side of 1968-69. Played in Football League Cup Final team of 1968-69. Height 5' 7½". Weight 11st.

JOHN TROLLOPE (left back): Born Swindon. A local player who joined the Swindon ground staff from school. He was selected for the first team at the beginning of the 1960-61 when he was just 16, and was ever present during that season. Regular member of promotion winning side of 1968-69. Played in Football League Cup Final team of 1968-69. Height 5' 10". Weight 11st 13lbs.

ROGER SMART (right half or inside forward): Born Swindon. Another local player who joined the club direct from Swindon schoolboys. He excels as a deep lying inside forward. Regular member of promotion winning side of 1968-69. Played in Football League Cup Final team of 1968-69. Height 5' 11½". Weight 12st 1lb.

FRANK BURROWS (centre half): Born Larkhall, Scotland. Signed from Scunthorpe, for whom he played three seasons. Formerly with Raith Rovers. Regular member of promotion winning side of 1968-69. Played in Football League Cup Final team of 1968-69. Height 6' 1". Weight 12st 8lbs.

STAN HARLAND (left half): Born Liverpool. Was signed from Carlisle United in July 1966. Formerly with Everton and Bradford City. He has been a regular choice at left half since making his debut at the beginning of the 1966-67 season. Height 6' 0". Weight 12st 5lbs.

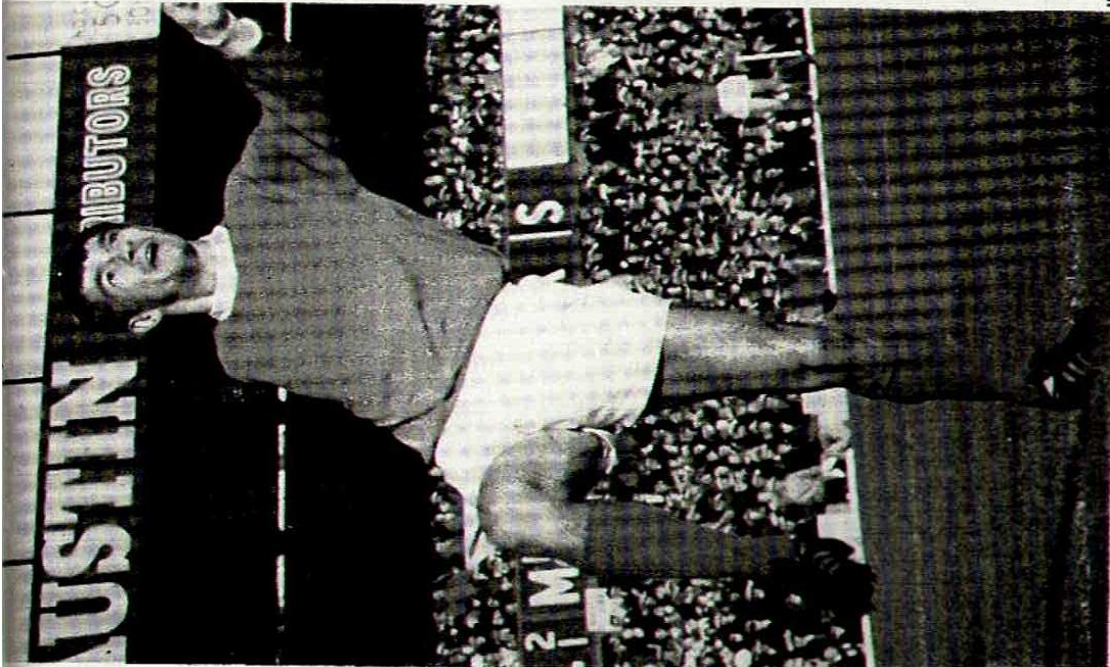
DON ROGERS (outside left): Born Paulton. Signed by Swindon when 15. Gained many England Youth Caps and played in the Under-23 team. Regular member of promotion winning side of 1968-69. Played in Football League Cup Final team of 1968-69. Height 5' 10". Weight 12st 10lbs.

PETER NOBLE (inside forward): Born Sunderland. Signed from Newcastle in January, 1968. Regular member of promotion winning side of 1968-69. Played in Football League Cup Final team of 1968-69. Height 5' 8". Weight 10st 10lbs.

JOHN SMITH (inside forward): Born London. Signed from Torquay in June, 1968, and previously played for Orient, West Ham, Tottenham and Coventry. Former England Under-23 International. Regular member of promotion winning side of 1968-69. Played in Football League Cup Final team of 1968-69. Height 5' 8". Weight 13st.

FRANK BURROWS





CHRIS JONES (centre forward): Born Altrincham. A hard working centre forward signed from Manchester City. Height 5' 11". Weight 11st 12lb.

ARTHUR HORSFIELD (inside forward): Born Newcastle. Signed from Newcastle United 18 months ago. Previously played for Middlesbrough, whom he joined as a Youth International. Top goalscorer last season. Height 5' 11". Weight 12st 1lb.

STEPHEN PELOW (outside right): Born Liverpool. Played for Liverpool Schoolboys, and joined Liverpool from school. Made three first-team appearances last season for Liverpool and was a regular member of the team which won the Central League for two consecutive years. Height 5' 9". Weight 10st 12lb.

TONY GOUGH (half back): Born Bath. Signed for Bristol Rovers from Bath City at age of 17 and subsequently returned to Bath. Signed from Bath City July, 1970, to return to League Football. Height 5' 5". Weight 10st. 10lb.

DAVID DANGERFIELD (inside forward): Born Nailsworth. English Schoolboy International. Signed as a professional 1969. Debut last season. Height 5' 8". Weight 11st 2lb.

PLAYER SPOTLIGHT . . . STAN HARLAND

● Stan Harland made several abortive attempts to break into professional football before he eventually succeeded. Yet as a boy it seemed he would have little trouble making the grade.

● Born in Liverpool, he played for the Liverpool Schoolboys XI and attracted the attention of several big clubs. Burnley signed him as an amateur but he made little progress so they allowed him to go. It was with non-League New Brighton that he satisfied his desire to become a professional. But he didn't like the idea of settling down permanently to that standard of football.

● After several good games, he was recommended to Everton, who were impressed sufficiently to take him on their staff. But, again, he didn't quite make it. It was after signing for Bradford City, then in the Fourth Division, that he really began to find his feet. He went straight into the first-team, remaining for three seasons until moving to Carlisle.

● He was an ever present member of the Carlisle team which won the Third Division championship in 1964/65. Then, after one season in the Second Division, he took the step which led to the most successful phase of his career—he signed for Swindon.

● Stan didn't miss a match in his first three seasons, the last of which culminated in Swindon gaining promotion to the Second Division and getting to Wembley for the League Cup final. As skipper, Stan had the thrill of leading his team to success against Arsenal at Wembley. The match went to extra time and Swindon won 3-1—one of their stars in defence being Stan Harland, the player who never gave up.

STAN HARLAND'S LEAGUE CAREER:

	Apps		Gls			
	Bradford City	Swindon				
1961/62	42	7	1966/67	46	0	
1962/63	41	8	1967/68	46	5	
1963/64	37	5	1968/69	46	1	
Carlisle			1969/70	41	0	
1964/65	46	3				
1965/66	31	4				
					<hr/>	
					376	33

PERSONAL PORTRAIT

No. 11 Malcolm Beard

FULL NAME: Malcolm Beard

BORN: Cannock

FIRST POSITION EVER PLAYED IN: I was an outside left when I first played for Blues, but for the school, I played at centre half, left half and inside left

FIRST CLUB: Blues

SIGNED: 6th May, 1957, full professional, May, 1959

HONOURS: England Youth Cap. I was also selected for the Under-23 side on two occasions but missed both matches because of injury

SCHOOLBOY HERO: Bert Williams. I thought he was fantastic

CLUB YOU FIRST SUPPORTED: I was a very keen Wolves supporter and used to go to Molineux for every match. I also used to travel away to see them. When I was still at school I used to go training two nights a week, on Tuesday and Thursday, with Wolves. Naturally, my ambition was to play for Wolves, but my father advised me to join Blues because he thought there was a better chance at St Andrew's

YOUR IDEA OF THE PERFECT PRO': Two words—Ron Wylie

BEST PLAYER IN YOUR POSITION: That's difficult because I have played in so many different positions. But in midfield I would say Colin Harvey of Everton and at the back I would pick Dave Mackay—a man who doesn't know the meaning of the word losing

FAVOURITE GROUND: Old Trafford. I generally play quite well there, and that makes a big difference, and the atmosphere is tremendous. You can guarantee that United will let you play football.

MOST MEMORABLE MATCH: Definitely the 3-3 draw in the Cup with Spurs. Three down in no time, we finished up unlucky not to win—and that Spurs side was a tremendous outfit

COUNTRIES PLAYED IN: Holland, East Germany, West Germany, Canada, USA, Belgium, France, Sweden, Italy, Spain

WIFE'S NAME: Pam

FAMILY: Two daughters, Lisa, three, and Lindsey, just 12 months

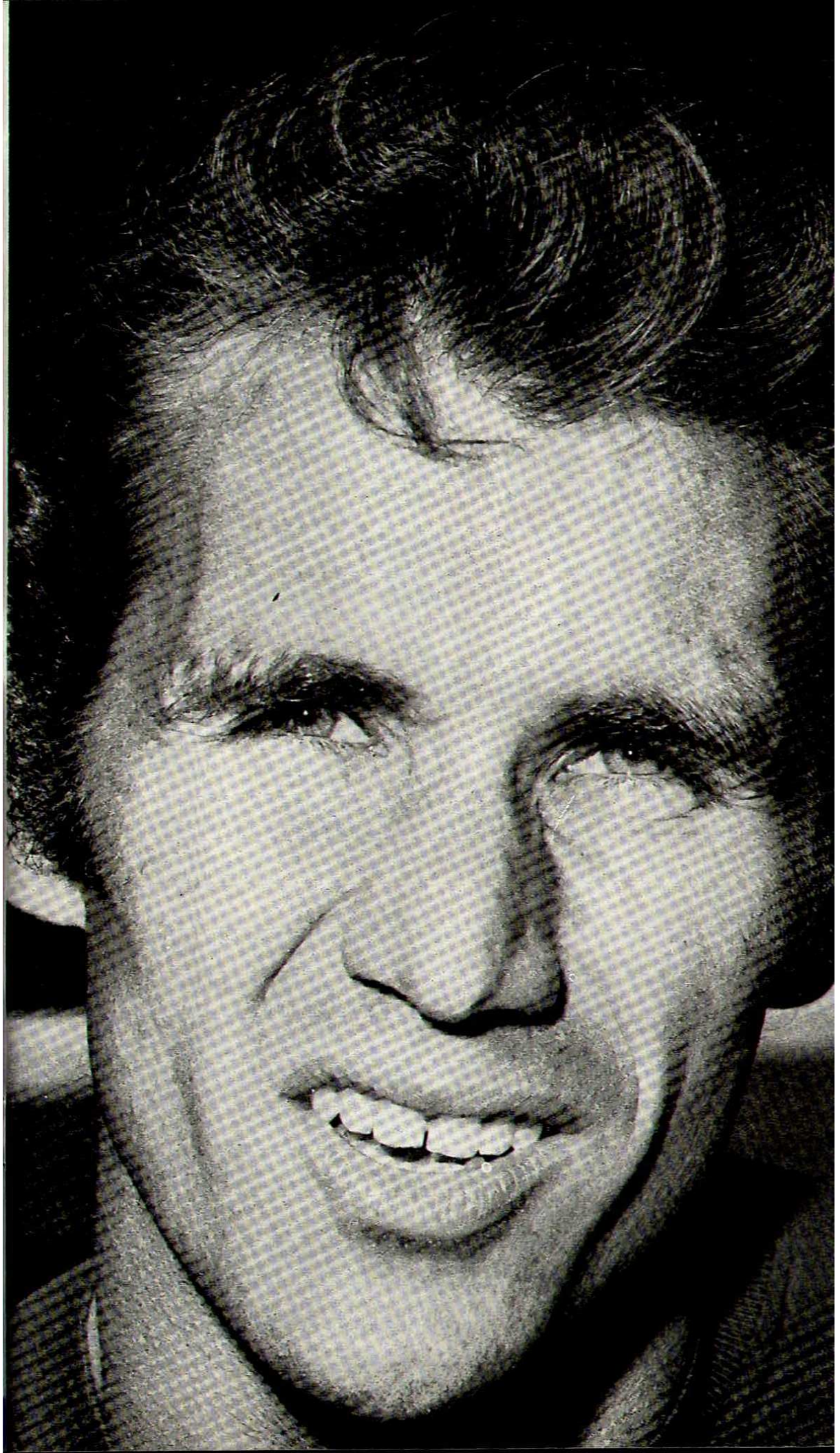
CAREER WHEN FINISH PLAYING: I don't think I will stay in the game as a coach or trainer. We have been thinking about emigrating to Canada

HOBBIES: Gardening and 'Do-it-Yourself'

PET HATE: Bus drivers

MUSICAL TASTES: Pretty general

SUMMER SPORTS: Cricket and golf



what the papers say

Southampton defender Jimmy Gabriel reckons that the modern centre half has one of the toughest jobs in the game. He pencilled his reasons in his weekly article in the *Southern Evening Echo*:

"Has anyone ever contemplated taking a walk in the Land of Giants? I must admit I don't much fancy the idea myself, but, on occasions when I've had the No. 5 jersey handed to me, that's exactly what I've had to do. A typical English League centre forward is tall, strong, very good with his head and usually average with his ground control—but four or five I have marked have had all-round ability allied to their height and weight.

"The giants I have played against in English football are: Ron and Wyn Davies, Jeff Astle, Tony Hateley, Joe Royle, John Ritchie and Martin Chivers, of present-day football, and Derek Kevan and Bobby Smith, of a few years back.



Tony Hateley . . . one of the big men who trouble Jimmy Gabriel

"Of them all, Kevan gave me my worst time, scoring four goals the first game and five the second. After the second run-around, all the players playing that day signed the match ball which was then presented to Derek. I was taken to one side by the manager and told that, if I didn't tighten my marking next time, he would get the lads to autograph ME and have Derek put me on the mantelpiece at home. I tightened up!"

Gabriel wound up his summary with a tip for the future. He said of Joe Royle: "Playing against him keeps any centre half occupied for the full 90 minutes, for Joe has ability in every department of his game.

"His control, passing and work-rate are every bit as good as his shooting and heading. Joe will be England's centre forward in Munich '74 and will probably win the Cup for them."

Wilf Smith, the Under-23 international full back who cost Coventry a six-figure fee earlier in the season, made his first return to former club Sheffield Wednesday a couple of weeks ago . . . and was watched by a crowd of 500! The *Sheffield Star Green 'Un* reported: "He made a surprise appearance in Coventry's reserve side as he continued to fight off the injury that has haunted him for months."

Johnny Carey, whose managerial experience has taken him to Blackburn, Leyton Orient, Everton and Nottingham Forest, is back in charge of team affairs at Blackburn after a back-room shake-up at Ewood Park. The *Lancashire Evening Post* recorded: "Johnny Carey, who has taken over Eddie Quigley's role of team manager, with Quigley looking after the scouting and young players' interests, is no newcomer to the managerial scene. Carey took Rovers back into the First Division 12 seasons ago during a six-year reign at Ewood." But the paper commented: "Carey's task is not an easy one. First, he has to get the side on to a winning streak. Then he has to bring back the crowds to Ewood. Finally, he has to try and do the most important job of all—keep the players who want away from Ewood."

The European Fairs Cup has truly been a 'pot of gold' for Newcastle United these last three seasons. The *Newcastle Evening Chronicle* revealed: "Well over half a million people have poured into Gallowgate to see a mere dozen games under the European banner. And, while United guard the gate receipt figures like Fort Knox gold, I reckon they have picked up around £250,000 from increased admission prices. Here is the full fantastic list of games and attendances that shows real romance being carried on:

Feyenoord	46,300	Sporting Lisbon	53,650
Real Zaragoza	56,200	Setubal	57,662
Rangers	59,403	Ujpest Dozsa	59,234
Dundee United	37,470	FC Porto	44,833
Southampton	38,183	Anderlecht	59,309
Inter Milan	56,495	Pecsi Dozsa	50,550

"That's a grand total of 619,289 fans in 12 matches . . . something of which Tyneside can be proud."

SOME PEOPLE ARE NEVER SATISFIED..

Spotted in the *Liverpool Echo* . . . a 'hard to please' supporter of Everton. He wrote of the League Champions: "We Everton fans are not getting the team we deserve. The players do not come up to the high standard we have a right to expect from an Everton team. There is a lack of class from back to front; the whole team smacks of mediocrity. It lacks character and personality." Our comment: How did they manage to stay in the League—let alone win the title?



BOB 'AT HOME' AWAY . . .

Bob Latchford has netted five goals this season—all of them away from St Andrew's. He notched two at Carlisle, one at Hull, and two more at Queen's Park Rangers. "It's time I netted before our own fans," says Bob, but he should be consoled by the thought that his goals recorded our only away points.

half time CHECK

Birmingham

(Royal Blue Shirts and Shorts)

FOOTBALL

A	BRISTOL CITY	_____
	SHEFF WED	_____
B	CARDIFF	_____
	HULL	_____
C	LEICESTER	_____
	BOLTON	_____
D	LUTON	_____
	SUNDERLAND	_____
E	MIDDLESBROUGH	_____
	WATFORD	_____
F	MILLWALL	_____
	QPR	_____
G	NORWICH	_____
	ORIENT	_____
H	OXFORD	_____
	CHARLTON	_____
I	PORTSMOUTH	_____
	BLACKBURN	_____
J	SHEFF UTD	_____
	CARLISLE	_____
K	ARSENAL	_____
	DERBY	_____
L	CHELSEA	_____
	SOUTHAMPTON	_____
M	LEEDS	_____
	COVENTRY	_____
N	LIVERPOOL	_____
	WOLVES	_____
O	NOTTM FOREST	_____
	TOTTENHAM	_____
P	ALBION	_____
	EVERTON	_____
R	READING	_____
	ASTON VILLA	_____
S	WALSALL	_____
	ROCHDALE	_____

1 Mike KELLY

2 Ray MARTIN

3 Garry PENDREY

4 Geoff VOWDEN

5 Roger HYND

6 Malcolm BEARD

7 Dennis THWAITES

8 Alan CAMPBELL

9 Bob LATCHFORD

10 Johnny VINCENT

11 Phil SUMMERILL

12

Referee:
T. W. Dawes
(Norwich)

Linesmen:
B. A. Devenport
Chester
(Red Flag)
B. Healey
Northwich
(Orange Flag)



Today's Match Ball
was presented by:

**W. H. BOWRON &
SON**
(Steel Stockholders)
74 Abbotsford Road
Birmingham 11
Tel: 021-772 1897

The Directors of
Birmingham City FC
record their grateful
thanks

Would you like to
donate a Match
Ball? Contact
Dennis Gilbert at
021-772 1245

THE MAN IN THE MIDDLE

After starting his refereeing career in Lancashire, **TOMMY DAWES** moved to Norfolk in 1952 and made his way through the Eastern Counties and Midland Leagues to reach the Football League line in 1954 and the referees' list three years later. Some of his more important matches have been FA Cup quarter-finals in 1958 and 1966, Football League Cup semi-final in 1966 and FA Youth Cup Final in 1969. He has also officiated in Under-23 internationals and European games. An area sales manager, Mr Dawes is married with two children and is interested in tennis, badminton, swimming and gardening.

Birmingham City v Swindon Town

Blue Shirts and Shorts

(Red Shirts and White Shorts)

FOOTBALL LEAGUE—DIVISION TWO

Referee:

T. W. Dawes
(Norwich)

Linesmen:

B. A. Devenport
Chester
(Red Flag)

B. Healey
Northwich
(Orange Flag)



Today's Match Ball
was presented by:

**W. H. BOWRON &
SON**
(Steel Stockholders)
74 Abbotsford Road
Birmingham 11
Tel: 021-772 1897

The Directors of
Birmingham City FC
record their grateful
thanks

Would you like to
donate a Match
Ball? Contact
Dennis Gilbert at
021-772 1245

Roy JONES 1

Rod THOMAS 2

John TROLLOPE 3

Joe BUTLER 4

Frank BURROWS 5

Stan HARLAND 6

John SMITH 7

Roger SMART 8

Arthur HORSFIELD 9

Peter NOBLE 10

Don ROGERS 11

12



ROD THOMAS

M&B BREW XI

ON DRAUGHT and IN BOTTLE

**For the Men
of the Midlands.**

Mitchells & Butlers Ltd. Birmingham



Bang-on Bob . . .

Bob Latchford's impressive record of away goal-scoring took a two-goal boost at Shepherd's Bush a fortnight ago—but we still fell to a 5-2 defeat against in-form Queen's Park Rangers. Goalkeeper Phil Parkes looks unhappy about the first goal (above) and Bob races off to accept congratulations from new boy Alan Campbell (below). In the bottom picture, it's a near miss for Bob as Parkes dives and sees the ball go wide.





... tough luck too

Goal-hungry Bob Latchford was also in the thick of the chase for more goals against Rangers, but long spells of good attacking football failed to destroy the advantage which Rangers gathered in the first 20 minutes. Above, left back Ian Gillard blocks a Latchford shot on the line and goalkeeper Parkes goes up to take a high ball from the centre forward. Below, another hectic moment for Parkes when pressed by Latchford.



Memory Match...

Nine goals in two matches against mighty Tottenham was the feat of goal-hungry Blues in the 1958-59 season. Although Spurs were then not the power of succeeding years, it was quite an achievement against a side that contained the nucleus of the 'Double-winning' line up of 1960-61. Here we recall the 5-1 home win thanks to information from the *Sports Argus* files.

ROBIN WRECKS THE SO-SAD SPURS

On the very day that Billy Wright was earning his 100th cap for England, a 17-year old ex Oldbury Grammar School boy, Robin Stubbs, was playing a blinder for Blues—helping us to record our best ever double over those fabulous 'Lilywhites' Tottenham Hotspur.

Three days earlier Stubbs had seen one of England's greatest post-war centre forwards, Nat Lofthouse, in action at St Andrew's. On this Saturday Stubbs led the line with such fire and skill that comparison must have been in the minds of everyone on the ground. Certainly, Dennis Shaw, of the *Sports Argus*, could not resist the temptation. He said: "In this talent-money chasing win, Stubbs looked as near to a young Nat as you are likely to see. His 18 yard drive would have made Lofthouse himself a proud man."

Stubbs, Hooper and Gordon led Maurice Norman & Co such a dance that Blues romped to a 5-1 win. Added to their 4-0 win at White Hart Lane some five months earlier, it brought Blues a 9-1 aggregate for the double.

And, said the *Argus*: "Johnny Watts was the best wing half on the field—despite Blanchflower." So it added up to a tremendous success for Blues and a great personal triumph for the Warley-born Stubbs, who had made his debut just two months earlier—solely because injuries and the transfer of Eddy Brown had left Blues without a recognised number nine.

The incredible thing about Stubbs, who ended his long career with Torquay last year and recently hit all four goals in a game for new club Bristol Rovers, was that he was at one time on the verge of turning his back on the game.

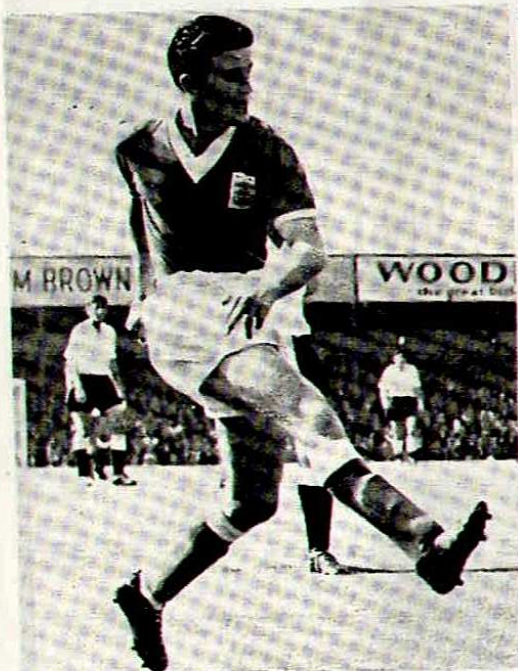
After a promising time as a schoolboy, he joined Albion as an amateur but never played in an actual game for them. "As they didn't think I was good enough, I was prepared to forget football," he said at the time. "I was quite surprised when Blues came along with an offer of a trial—and I was really shocked when they said they would sign me as a full-time professional."

BLUES' ROBIN TOO CHIRPY FOR SAD SPURS

Verdict by Dennis Shaw.

BIRMINGHAM CITY 5 — SPURS 1

Robin Stubbs, 17-year-old ex-Oldbury Grammar Schoolboy, saw—and admired—Nat Lofthouse's display for Bolton at St. Andrew's on Wednesday. Young Mr. Stubbs must have learned something, for the Blues leader turned in his finest display this afternoon in helping Blues thrash Tottenham.



Blues' stars in famous win against Spurs . . . HARRY HOOPER (left) and ROBIN STUBBS

Twelve months after joining the staff, Stubbs made his debut and immediately hit the headlines with eight goals in as many matches. But his best game for Blues was undeniably that clash with Spurs.

Goalkeeper Hollowbread had been Spurs' saviour in the November clash at White Hart Lane and he started the second match as if he once again meant to hold Blues at bay for most of the afternoon. Shortly after the kick off—with Blues powering forward in heavy rain which was making the ground conditions extremely difficult—he excelled with great saves from Astall, Larkin (twice) and Hooper.

After half an hour, Spurs must have thought they had weathered the storm, thanks to Hollowbread, but five minutes later Stubbs removed the padlock from their defence with a picture goal.

Said the *Argus*: "Young Stubbs put Blues ahead with a great goal that he had so richly deserved. Watts played a low ball into the middle to Stubbs, who was stationed just outside the box. The confident young centre forward controlled the ball cleverly, half turned, and from the 18-yard line, hit a right footer that beat Hollowbread easily and went in off the right hand upright—a goal worthy of Lofthouse himself."

It was just the spur Blues needed and they threw everything at the Londoners. Baker sparked off a tremendous goalmouth scramble when he cleared off the line from Hooper, but a minute before half time Blues went two ahead. Hooper did the spadework and crossed to the edge of the box where Gordon, running in, hit a bullet-drive past Hollowbread.

Only two minutes after the break it was 3-0 and once again the bubbling Stubbs was the man behind it. Stubbs, moving on to another fine through pass from the impressive Watts, was floored from behind by Iley. It was a clear penalty and Hooper beat Hollowbread with a low drive to the right of the goal. On the hour it was Spurs' turn to be awarded a penalty after Bobby Smith had been tripped and Cliff Jones made the job look just as easy as Hooper had done.

But there was no stopping Blues. In the 75th minute Watts fed Gordon and his centre left Larkin with the simplest of jobs from a few yards out. Eight minutes from the end Hooper bewildered the Spurs' defence and his centre was turned into his own net by Baker.

HOW THEY LINED UP

BIRMINGHAM CITY 5 (Stubbs, Gordon, Hooper (pen.), Larkin, Baker o.g.)
SPURS 1 (Jones, pen.)

BIRMINGHAM CITY: Merrick; Farmer, Allen; Watts, Smith, Neal; Astall, Gordon, Stubbs, Larkin, Hooper.

SPURS: Hollowbread; Baker, Hopkins; Blanchflower, Norman, Iley; Medwin Harmer, Smith, Brooks, Jones.

REFEREE: R. M. Jordan (Leicester)



BEAU BRUMMIE PROMOTIONS

Pop into the **BEAUTIQUE**

For all soccer souvenirs and club programmes

REPLICAS OF THREE TROPHIES . . .



★ European Competitions Cup 5/11 ★ Footballer Statuette 4/11 ★ World Cup 6/11
Available now from The Beautique, 26 Cattell Rd, Birmingham 9
Write or call for a full price list.

ALLIED SPORTS DEVELOPMENT ASSOCIATION (Promoted by Birmingham City FC)

£2000 worth of prizes! Just *one* 2-shilling ticket entitles you to 20 weeks' entry in a £50 draw . . . the chance to win £500 or £250 in an FA Cup draw . . . plus 25 Christmas hampers, valued at £10.

Details from **G. R. Chelmick**, 26 Cattell Road, Birmingham 9.
Tel.: 021-772 1245.

The exclusive "D" Club at St Andrew's offers:

£50 fortnightly prize **£200** every quarter
PLUS a Season Ticket and use of luxury bar and refreshment facilities under the Main Stand. Full details from: **D. Gilbert**, 26, Cattell Road, Birmingham 9.



FOOTBALL AT ST. ANDREW'S

SATURDAY, NOVEMBER 7 (3 p.m.)

Football Combination

BIRMINGHAM CITY RES.

v.

IPSWICH TOWN RES.

SATURDAY, NOVEMBER 14 (3 p.m.)

Football League—Division II

BIRMINGHAM CITY

v.

ORIENT

BIRMINGHAM CITY FC MAGAZINE

Office: 26 Cattell Road, Birmingham 9. Tel.: 021-772 1245

Editor: Dennis Gilbert. Editorial Team: John Moxley, Mike Beddow and Norton Jones

Advertising Contractor: Frank Mason & Co. Ltd., 33 Norfolk Street, Strand, London WC2,
and 117 John Bright Street, Birmingham 1. Tel.: 021-643 9437.

Designed and printed by West Midlands Press Ltd., Walsall

blues diary

1970/71

MATCH DETAILS

TUESDAY, 13th OCTOBER
QPR RES 2, BIRMINGHAM CITY RES 2
 Birmingham: Herriot; Whitehead, Green; Childs, Steuwenhook, Beard; Page, Bowker, Hazeley, Wootton, Thwaites.
 Birmingham Scorers: Bowker, Thwaites.

SATURDAY, 17th OCTOBER
QPR 5, BIRMINGHAM CITY 2
 QPR: Parkes; Clement, Gillard; Hunt, Watson, Hazell; Morgan, Venables, McCulloch, Marsh, Ferguson. Sub: Francis.
 Birmingham: Kelly; Thomson, Martin; Robinson (sub: Vowden), Hynd, Beard; Campbell, Hockey, Latchford (R), Vincent, Summerill. Scorers—QPR: Marsh (3), Venables, McCulloch. B'ham: Latchford (2). Attendance: 13,704

BIRMINGHAM CITY RES 1, CRYSTAL PALACE RES 0
 Birmingham: Herriot; Pacey, Green; Childs, Steuwenhook, Harrison; Murray, Page, Hazeley, Bowker, Thwaites. Sub: Wootton. Scorer: Murray.

WOLVES 'A' 1, BIRMINGHAM CITY 'A' 0
 Birmingham: Cooper; Osborne, Gallagher; Jenkins, Callaghan, Howitt; Fryer, Phillips, Cramphorne, Bryant, Morris.

TUESDAY, 20th OCTOBER
BIRMINGHAM CITY 0, LEICESTER CITY 0
 Birmingham: Latchford (D); Martin, Thomson; Yowden, Hynd, Beard; Campbell, Hockey, Latchford (R), Vincent, Summerill. Sub: Francis.
 Leicester: Shilton; Whitworth, Nish; Kellard, Sloberg, Cross; Farrington, Partridge, Brown, Carlin, Glover. Sub: Manley. Attendance: 25,381

WEDNESDAY, 21st OCTOBER
BIRMINGHAM CITY YOUTHS 6, COVENTRY CITY YOUTHS 2
 Birmingham: Cooper; Osborne, Gallagher; Jenkins, Harrison, Good; Shipman, Phillips, Wright, Bryant, Fryer.
 B'ham scorers: Wright (3), Jenkins, Phillips, Fryer.

LEAGUE DIVISION TWO				FOOTBALL COMBINATION				MIDLAND INTERMEDIATE LEAGUE			
Date	Opponents	Att	Res	Date	Opponents	Res	Res	Date	Opponents	Res	Res
1970	QPR	30,785	2-1	1970	Oxford	3-2		1970	Stoke	2-0	
Aug 15	Wrexham (FLC)	21,623	3-3	Aug 15	Arsenal	2-0	A	Aug 15	Walsall	2-0	A
Aug 18	Carlisle	9,249	3-0	Aug 22	Bristol Rovers	0-0	H	Aug 22	Albion	4-2	H
Aug 22	Wrexham (FLC)	17,019	3-2	Aug 26	Bristol Rovers	1-1	A	Aug 29	Albion	4-2	H
Aug 29	Luton	30,141	1-1	Sept 5	Reading	4-1	H	Sept 5	Shrewsbury	0-1	H
Sept 1	Middlebrough	27,769	0-1	Sept 8	Gillingham	1-1	A	Sept 12	Wolves	3-2	H
Sept 5	Cardiff	22,081	0-2	Sept 12	C Palace	1-0	A	Sept 19	Stoke	1-1	H
Sept 9	Colchester (FLC 2)	8,085	1-1	Sept 19	Bournemouth	1-4	A	Sept 26	Walsall	1-3	H
Sept 12	Oxford	22,346	1-1	Sept 26	Fulham	0-0	A	Oct 3	Albion	0-1	A
Sept 15	Colchester (FLC 2)	17,706	2-1	Oct 3	Oxford	3-1	H	Oct 10	Shrewsbury	2-1	H
Sept 19	Portsmouth	18,037	0-1	Oct 10	West Ham	2-2	A	Oct 17	Wolves	0-1	A
Sept 26	Charlton	20,767	1-1	Oct 13	QPR	1-0	H	Oct 17	Wolves	0-1	A
Sept 29	Bristol City	15,973	1-2	Oct 17	C Palace	1-0	H				
Oct 3	Hull	23,015	1-0	Oct 24	Swansea	1-0	A				
Oct 6	Nottm. F. (FLC 3)	22,350	2-1	Oct 31	Swindon	1-0	A				
Oct 10	Sheffield United	13,704	0-1	Nov 7	Ipswich	1-0	H				
Oct 17	QPR	25,381	2-5	Nov 14	Southampton	1-0	H				
Oct 20	Leicester	14,707	0-0	Nov 21	Bristol City	1-0	H				
Oct 24	Watford	21,426	1-2	Nov 24	Plymouth	1-0	H				
Oct 27	Bristol Rovers (FLC 4)		0-3	Nov 28	Chelsea	1-0	H				
Oct 31	Swindon		0-3	Dec 5	Norwich	1-1	H				
Nov 7	Sunderland		1-2	Dec 13	QPR	1-1	H				
Nov 14	Orient		1-2	Dec 15	Arsenal	1-1	H				
Nov 21	Bolton (1)		1-2	Dec 19	Cardiff	1-1	H				
Nov 28	Norwich City		1-2	Dec 26	Cardiff	1-1	H				
Dec 5	Millwall		1-2								
Dec 12	Sheffield Wed. (2)		1-2								
Dec 19	Cardiff		1-2								
Dec 26	Blackburn		1-2								
1971	FA Cup 3		1-2	1971	Bristol City	1-1	A	1971	Walsall	1-1	A
Jan 2	Bristol City		1-2	Jan 9	Leicester	1-1	H	Jan 2	Albion	1-1	H
Jan 9	Leicester		1-2	Jan 16	Tottenham	1-1	H	Jan 9	Albion	1-1	H
Jan 16	FA Cup 4		1-2	Jan 23	Chelsea	1-1	H	Jan 16	Albion	1-1	H
Jan 23	Norwich		1-2	Jan 30	Chelsea	1-1	H	Jan 23	Albion	1-1	H
Jan 30	Millwall		1-2	Feb 6	Norwich	1-1	H	Feb 6	Coventry	1-1	H
Feb 6	Sheffield Wed (5)		1-2	Feb 13	Tottenham	1-1	H	Feb 13	Derby	1-1	H
Feb 13	Bolton		1-2	Feb 20	Plymouth	1-1	H	Feb 20	Leicester	1-1	H
Feb 20	Swindon		1-2	Feb 27	Swindon	1-1	H	Feb 27	Leicester	1-1	H
Feb 27	Swindon		1-2	Mar 6	Swansea	1-1	H	Mar 6	Leicester	1-1	H
Mar 6	Ward (6)		1-2	Mar 13	Southampton	1-1	H	Mar 13	Leicester	1-1	H
Mar 13	Orient		1-2	Mar 20	Ipswich	1-1	H	Mar 20	Leicester	1-1	H
Mar 20	Luton		1-2	Mar 31	Reading	1-1	H	Mar 27	Walsall	1-1	H
Mar 27	Cardiff (SF)		1-2	Apr 13	Bristol Rovers	1-1	H				
Apr 3	Oxford		1-2	Apr 17	Cardiff	1-1	H				
Apr 9	Blackburn		1-2	Apr 20	West Ham	1-1	H				
Apr 13	Hull		1-2	Apr 27	Gillingham	1-1	H				
Apr 17	Sheffield Utd		1-2	May 1	Bournemouth	1-1	H				
Apr 24	Portsmouth		1-2	May 1	Fulham	1-1	H				
Apr 27	Middlesbrough		1-2								
Apr 27	Charlton		1-2								
May 1	FA Cup Final		1-2								

Ansells Bittermen. You can't beat 'em.



CO-OP TV RENTALS

from 9/- per week

BIRMINGHAM CO-OPERATIVE SOCIETY LTD.

**CO-OP TV
RENTAL
SERVICE**

High Street,
Birmingham, 4.
643 5071 Ext.261

The elegant 20" Co-op T.V Set combining the latest technical features to give a new quality to your viewing can now be yours for an initial payment of £23/8/0 and then just 36/- per calendar month equalling 9/- per week. Other models available by Bush and Murphy

FULL DIVIDEND
ON ALL
REPAYMENTS.



goals and gates

AT A GLANCE...

LEAGUE DIVISION ONE

P	W	D	L	F	A	Pts		Home Gates		Best wins	
								Best	Average	Home	Away
14	9	4	1	22	9	22	Leeds	50,190	42,743	3-0	3-0
14	8	4	2	30	14	20	Arsenal	54,117	42,974	6-2	3-1
14	7	5	2	22	10	19	Tottenham	53,640	37,678	3-0	3-0
14	7	4	3	16	10	18	Crystal Palace	41,486	31,374	3-0	2-0
14	6	6	2	20	16	18	Chelsea	53,722	45,869	2-1	4-3
13	8	2	4	29	27	18	Wolves	38,629	27,098	3-0	3-2
13	6	5	2	17	11	17	Man City	37,849	34,370	4-1	1-0
13	5	5	3	15	7	15	Liverpool	52,628	46,743	4-0	2-1
14	5	4	5	17	13	14	Southampton	27,149	22,527	4-0	3-0
14	5	4	5	21	22	14	Everton	50,724	45,639	3-1	2-0
14	4	5	5	18	19	13	Stoke	23,025	17,769	5-0	—
14	5	3	6	13	14	13	Coventry	31,028	28,050	3-1	4-3
14	4	5	5	16	19	13	Newcastle	38,320	35,351	3-2	2-0
14	4	5	5	15	19	13	Man Utd	59,365	49,272	2-0	2-0
14	3	6	5	13	18	12	Nottm Forest	31,537	25,158	4-1	—
14	3	6	5	12	17	12	Huddersfield	27,997	22,096	3-0	—
14	4	3	7	16	21	11	Ipswich	27,776	20,069	4-0	—
14	4	3	7	18	22	11	Derby	35,461	32,392	2-0	4-2
14	3	5	6	23	32	11	Albion	37,255	28,255	5-2	—
14	1	8	5	16	22	10	West Ham	42,322	32,283	3-1	—
14	2	4	8	13	27	8	Blackpool	30,705	24,176	3-1	2-1
14	0	4	10	6	24	4	Burnley	29,385	19,260	—	—

LEADING GOAL SCORERS (League and Cup games—up to and including Tues., 27th Oct.)

Division One

Kennedy (Arsenal) ..	12	Curran (Wolves) ..	8	Ritchie (Stoke) ..	7
Chivers (Tottenham) ..	9	Davies (Southampton) ..	8	Bell (Man City) ..	6
Gould (Wolves) ..	9	Evans (Liverpool) ..	8	O'Hare (Derby) ..	6
Martin (Coventry) ..	9	Hurst (West Ham) ..	8	Radford (Arsenal) ..	6
Weller (Chelsea) ..	9	Channon (Southampton) ..	7	Smith (Huddersfield) ..	6
Astle (Albion) ..	8	Graham (Arsenal) ..	7	Viljoen (Ipswich) ..	6
Brown (Albion) ..	8	Queen (C Palace) ..	7		

Division Two

Macdonald (Luton) ..	14	Venables (QPR) ..	8	Vowden (B'ham C) ..	6
Hickton (Middlesbro') ..	13	Clark (Cardiff) ..	7	Atkinson, G (Oxford) ..	5
Horsfield (Swindon) ..	10	McIlmoyle (Middlesbro') ..	7	Dearden (Sheff Utd) ..	5
Possee (Millwall) ..	9	Summerill (B'ham C) ..	7	Hiron (Portsmouth) ..	5
Wigg (Watford) ..	9	Baker (Sunderland) ..	6	Latchford (B'ham C) ..	5
Chilton (Hull) ..	8	Bennett (Norwich) ..	6	Nish (Leicester) ..	5
Givens (Luton) ..	8	Bridges (Millwall) ..	6	Sharpe (Bristol City) ..	5
Hatton (Carlisle) ..	8	Brown (Leicester) ..	6	Silvester (Norwich) ..	5
Marsh (QPR) ..	8	Farrington (Leicester) ..	6	Skirton (Bristol City) ..	5
Partridge (Leicester) ..	8	Woodward (Sheff Utd) ..	6	Wagstaff (Hull) ..	5
Rogers (Swindon) ..	8				

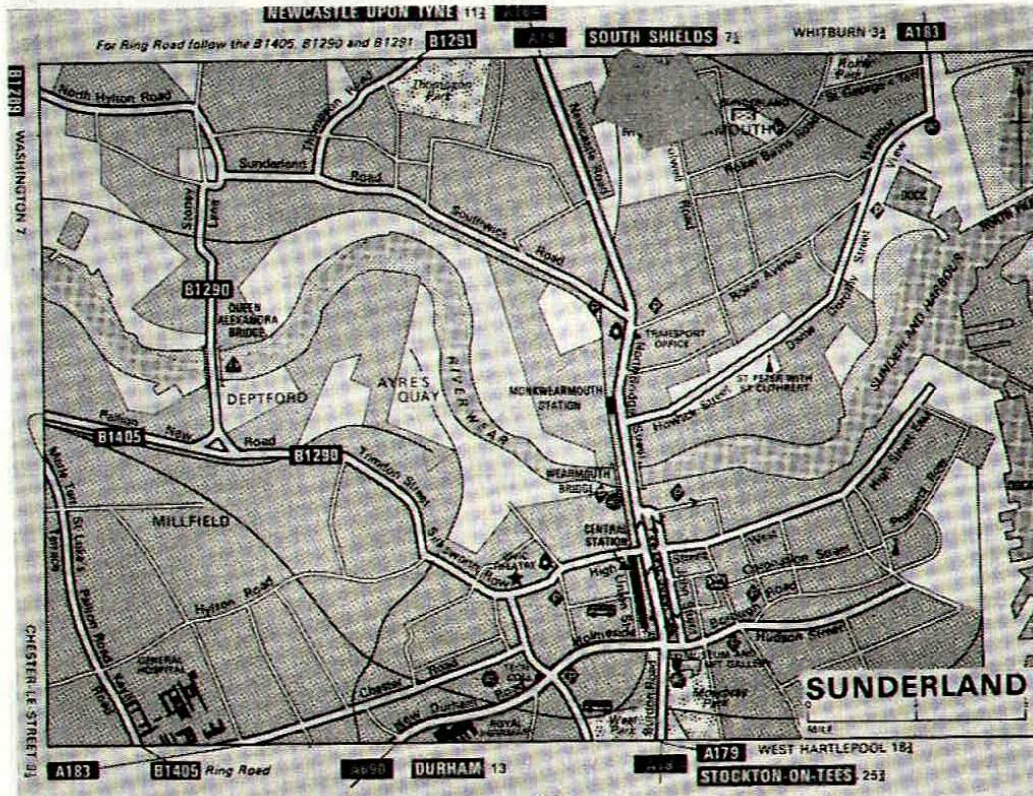
LEAGUE DIVISION TWO

P	W	D	L	F	A	Pts		Home Gates		Best wins	
								Best	Average	Home	Away
14	9	3	2	19	9	21	Hull	25,340	19,225	2-0	2-0
14	8	4	2	26	8	20	Luton	19,055	16,490	4-0	5-1
14	8	4	2	24	11	20	Leicester	27,578	24,354	4-0	3-0
14	6	6	2	25	18	18	Sheff Utd	39,983	21,999	3-1	5-1
14	7	4	3	20	15	18	Oxford	15,058	13,171	2-1	4-0
13	5	6	2	18	13	16	Cardiff	26,008	23,280	2-0	2-0
14	5	6	3	16	14	16	Carlisle	16,623	11,041	3-0	—
14	5	5	4	13	12	15	Norwich	16,640	13,451	2-0	2-0
14	6	2	6	26	22	14	QPR	19,273	15,899	5-1	3-1
14	6	2	6	21	21	14	Middlesbrough	21,104	17,662	6-2	4-3
14	5	3	6	16	13	13	Swindon	18,698	16,264	3-0	—
14	5	3	6	19	16	13	Sunderland	18,741	16,051	4-1	—
15	5	3	7	19	24	13	Bolton	13,130	9,620	4-0	2-0
14	4	5	5	16	22	13	Watford	17,009	14,983	2-1	3-2
14	4	4	6	15	18	12	Millwall	12,160	9,407	3-0	3-1
15	4	4	7	18	26	12	Sheff Wed	23,160	16,112	3-0	3-2
14	3	6	5	9	18	12	Orient	14,746	10,883	3-1	—
13	4	3	6	18	18	11	Portsmouth	18,712	16,433	5-0	—
14	3	4	7	13	18	10	B'HAM CITY	30,785	25,648	2-1	3-0
14	2	6	6	11	19	10	Blackburn	10,421	7,951	2-1	—
14	3	4	7	16	28	10	Bristol City	24,920	16,909	4-3	—
14	1	5	8	9	24	7	Charlton	15,867	11,412	2-1	—

guide to getaway

SUNDERLAND v. BIRMINGHAM CITY

Saturday, 7th November (3 p.m.)



An AA Map

BY CAR...

BIRMINGHAM: Leave by A38 to join A453 at Sutton Coldfield. Proceed via Tamworth, Measham and Ashby-de-la-Zouch to A6, then join M1 Motorway. Proceed on M1 and A1(M) to end of Motorway. Continue on A1 and then A1(M) to Carrville. Right on A690 to **SUNDERLAND**. Sunderland FC ground (see Town Plan)

is at Roker Park, 1½ miles north of Sunderland town centre off the A183 (South Shields) road.

BY COACH...

The Supporters' Club coach leaves the St Andrew's Club at 8 a.m. Fare 28/- (children 17/6).

BOOK YOUR AWAY TICKETS IN ADVANCE

SUNDERLAND (7th November)

Available: Now.
The Secretary
Sunderland FC
Roker Park
Sunderland
Tel: Sunderland 72077
Prices: 14/6 (Centre Stand); 13/6 (Upper Enclosure), 13/- (Fulwell and Roker Wing Stands), 12/6 (Clock Stand)

BOLTON WANDERERS (21st November)

Available: Two weeks in advance
The Secretary
Bolton Wanderers FC
Burnden Park
Bolton BL3 2QR
Tel: Bolton 21101
Prices: 11/- (Centre Stand), 10/- (Burnden Stand), 8/- (Wing Stand)

Remember: always enclose correct remittance and stamped addressed envelope.

PLASTERERS

Win a colour television set

All plasterers working for us
satisfactorily throughout
November and December 1970
will qualify for a free ticket.

The draw will be made early
January 1971 and we will give a
colour television set and licence to the
successful ticket holder.

Phone: 021-458 6371

blues appearances 1970/71

FIRST TEAM				FOOTBALL COMB'N				JUNIORS			
League		Lge Cup		Aps Gls		Mid Inter		Mid Youth			
Aps	Gls	Aps	Gls	Aps	Gls	Aps	Gls	Aps	Gls		
Beard	3	0	0	0	0	6	0	5	1		
Bowker	1	0	0	0	0	8	2	7	1		
Campbell	3	0	0	0	0	1	0	7	0		
Darrell	0	0	1	0	0	11	0	7	0		
Francis	4	1	1	0	0	7	2	9	0		
Green	3	0	1	0	0	5	4	4	0		
Hateley	2	0	0	0	0	4	0	5	0		
Hockey	13	0	5	1	0	8	0	5	0		
Hynd	14	0	5	0	0	5	0	4	0		
Johnston	0	0	1	0	0	6	4	4	0		
Kelly	12	0	5	0	0	6	0	6	0		
Latchford, D	2	0	0	0	0	1	0	1	1		
Latchford, R	12	5	4	0	0	3	0	2	3		
Martin	8	0	2	0	0	1	0	4	2		
Murray	6	0	3	1	0	1	0	2	1		
Page	1	0	1	0	0	3	0	7	2		
Pendrey	10	0	4	0	0	3	0	8	1		
Robinson	12	0	5	0	0	7	1	7	2		
Sleeuwenhoek	1	0	0	0	0	10	0	3	1		
Summerill	13	3	4	4	0	3	1	7	3		
Thomson	8	0	4	0	0	1	0	8	3		
Thwaites	1	0	0	0	0	1	0	3	4		
Vincent	12	1	4	2	0	11	0	7	3		
Vowden	13	3	5	3	0	2	1	8	5		
Beard	10	1	1	1		
Bowker	10	1	1	1		
Bolton	10	1	1	1		
Bryant	10	1	1	1		
Burns	10	1	1	1		
Callaghan	10	1	1	1		
Cooper	10	1	1	1		
Connor	10	1	1	1		
Cramphorne	10	1	1	1		
Emmanuel	10	1	1	1		
Francis	10	1	1	1		
Fryer	10	1	1	1		
Gallagher	10	1	1	1		
Good	10	1	1	1		
Harrison	10	1	1	1		
Howitt	10	1	1	1		
Jenkins	10	1	1	1		
Morris	10	1	1	1		
Osborne	10	1	1	1		
Peat	10	1	1	1		
Phillips	10	1	1	1		
Shipman	10	1	1	1		
Wright	10	1	1	1		

Up to and including 27th October

FOOTBALL COMBINATION
Tables of Results to Tuesday, 27th October 1970 (not inclusive)

Leading positions	P	W	D	L	F	A	Pts
Tottenham	14	9	3	2	29	5	21
Swansea	14	8	5	1	28	11	21
Bristol City	13	7	6	0	27	11	20
Birmingham City	14	7	6	1	22	14	20
Southampton	15	9	2	4	17	13	20
West Ham	14	8	2	4	27	12	18
Arsenal	13	6	4	3	31	14	16
QPR	13	6	4	3	22	17	16
Leicester	14	6	3	5	17	12	15
Ipswich	14	5	5	4	18	19	15
Norwich	14	6	3	5	16	19	15
Cardiff	14	4	5	5	15	10	13
Bournemouth	15	5	3	7	15	21	13

MIDLAND INTER LEAGUE CUP

Section 'A'	P	W	D	L	F	A	Pts
Wolves	10	5	3	2	29	14	13
Walsall	10	6	1	3	24	20	13
Birmingham	10	5	1	4	15	12	11
WB Albion	9	3	4	2	13	11	10
Shrewsbury	10	3	3	4	12	24	9
Stoke	9	0	2	7	9	21	2

Section 'B'

Leicester	10	6	3	1	16	7	15
Nottingham Forest	10	4	3	3	18	9	11
Derby	10	4	3	3	16	17	11
Coventry	10	3	3	4	11	12	9
Mansfield	10	3	2	5	12	18	8
Aston Villa	10	2	2	6	8	18	6

Leicester now meet Wolves for the League Cup.



winners
at home
or away



Swallow Raincoats Ltd.
Trafalgar Street, Salford 7, Lancs.